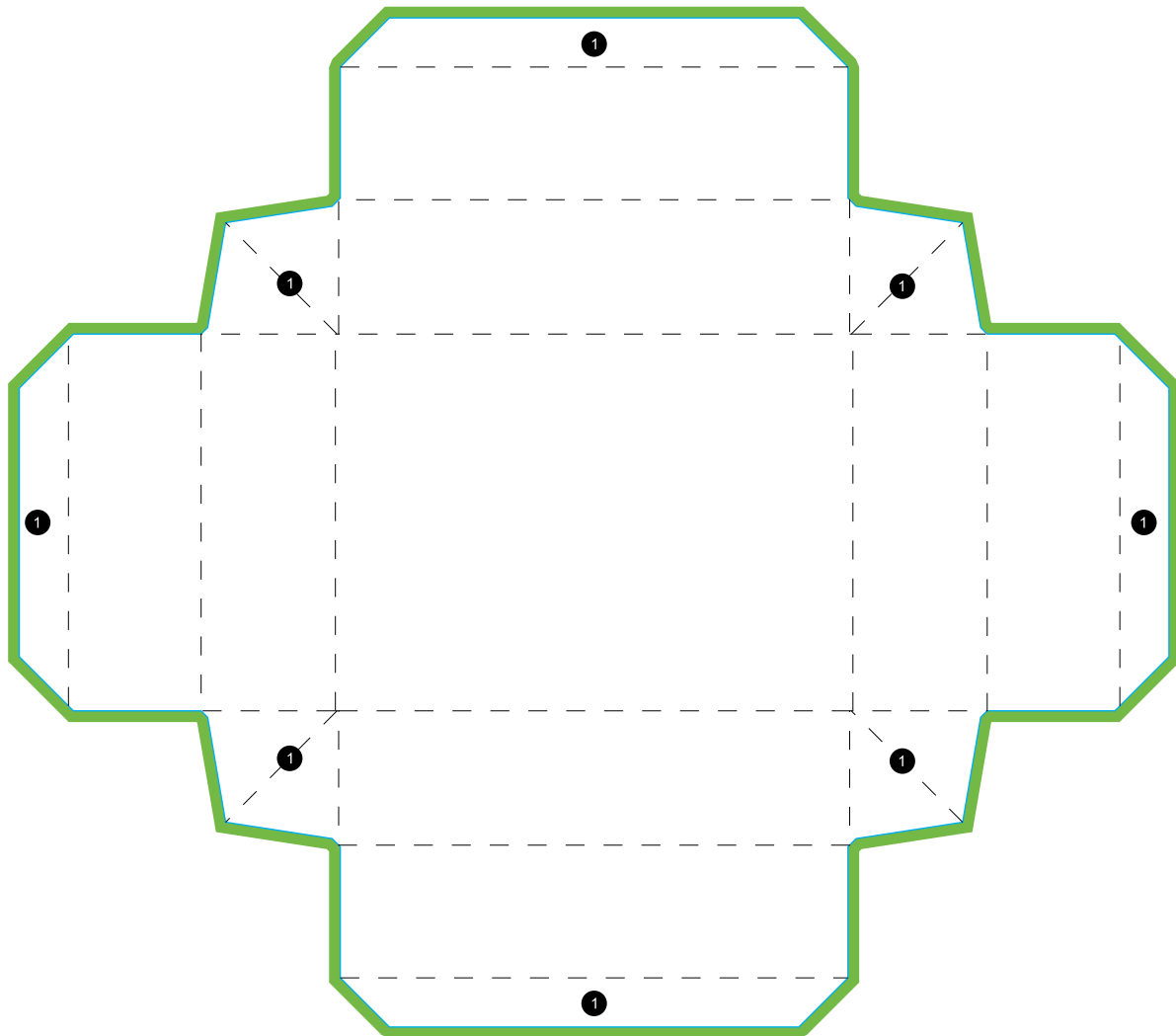




Self Locking Tray Open (No Lid)



1 Flap

Please do not delete cutting die!

EXPLANATIONS



Information area
This area is where you should place your text and images.



Bleed (3 mm)
Place backgrounds and bleed-off images in this additional area in order to prevent white borders after trimming.

--- **Folding line**
This is where your product will be folded.

— **Preforation line / cutting line**
This is where your product will be punched / cut.