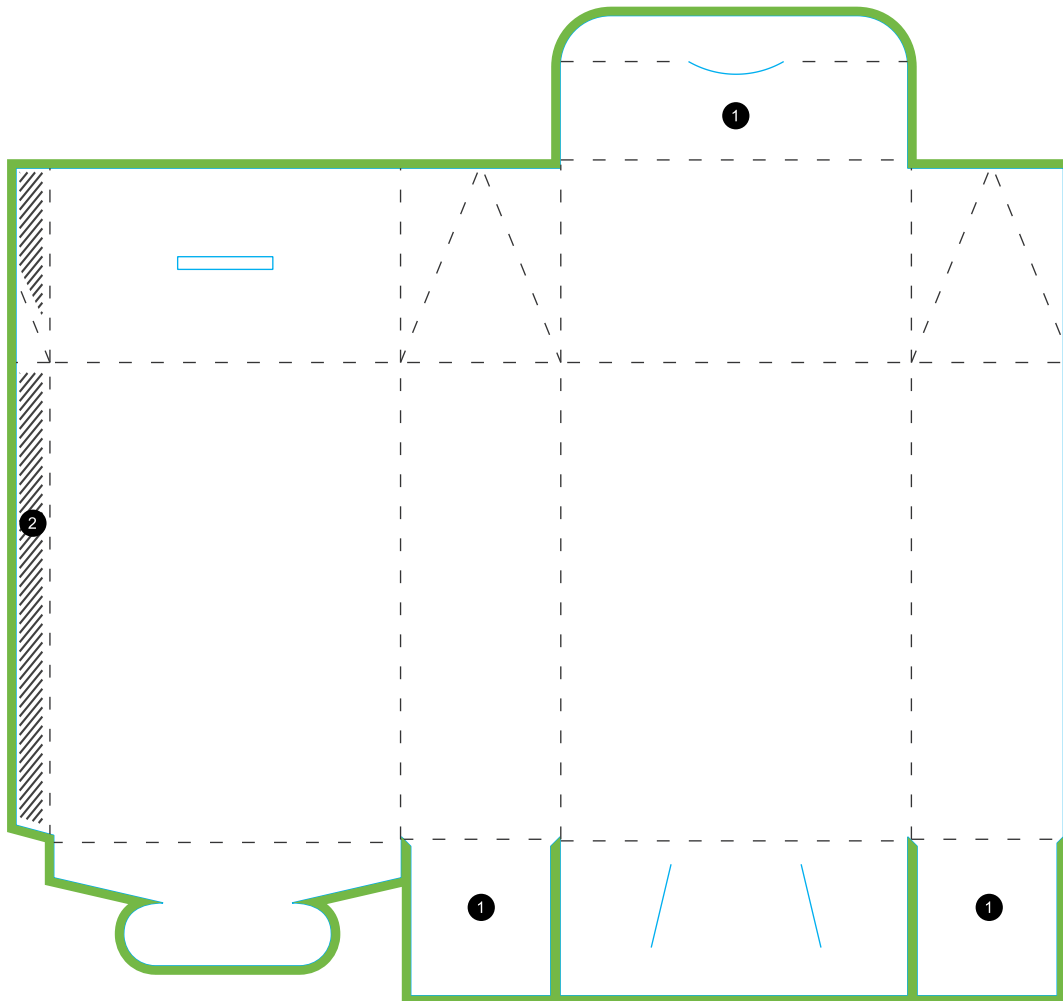






# Cardboard Gift Bag with Bottom Insert and Locking Tab Top






- 1 Flap
- 2 Glue flap

Please do not delete cutting die!

## EXPLANATIONS

-  Information area  
This area is where you should place your text and images.
-  Bleed (3 mm)  
Place backgrounds and bleed-off images in this additional area in order to prevent white borders after trimming.

-  Colourless area (Adhesive area)  
Keep this area free of any designs.
-  Folding line  
This is where your product will be folded.
-  Preforation line / cutting line  
This is where your product will be punched / cut.