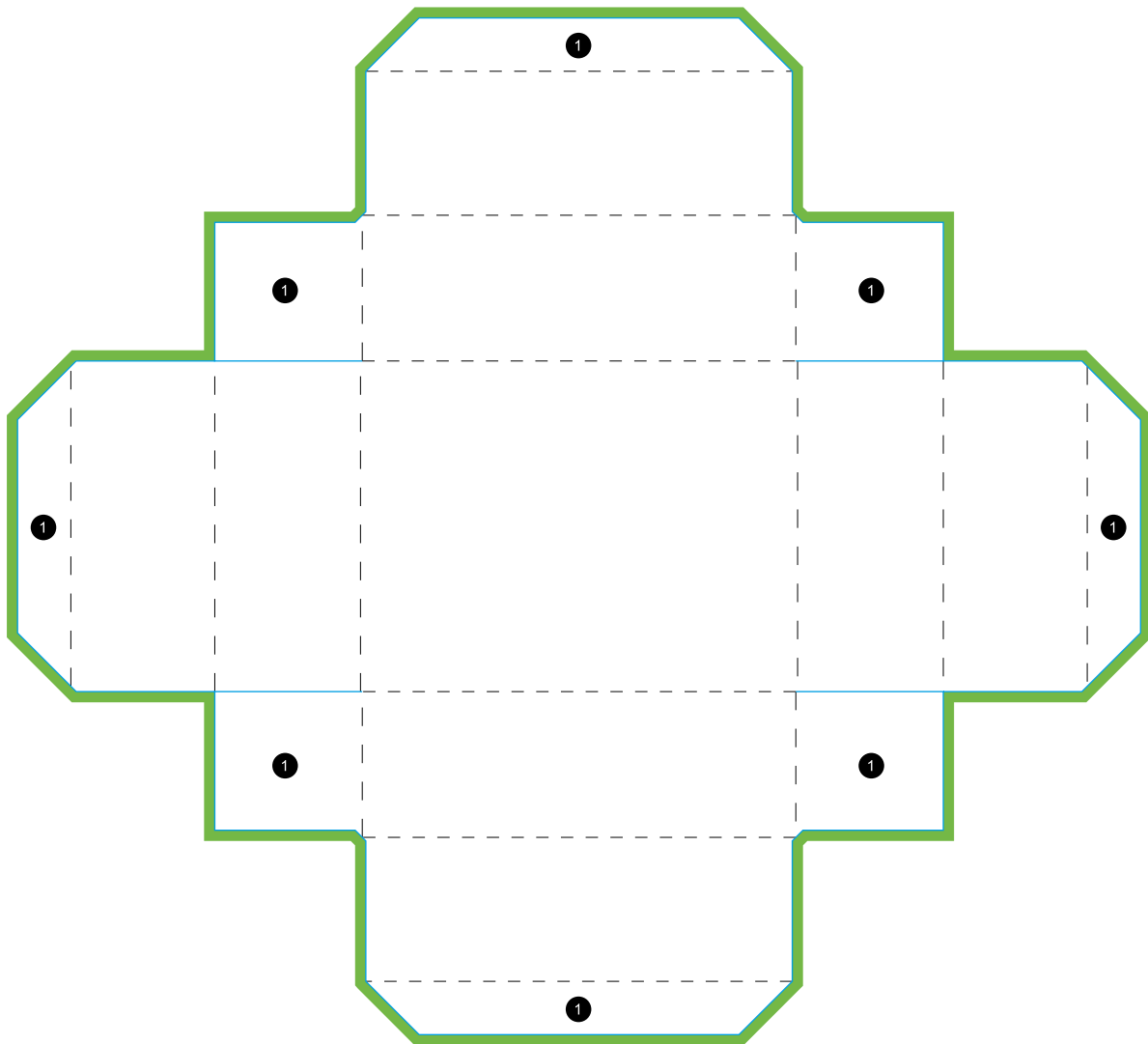






Self Locking Tray with Removable Lid

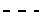



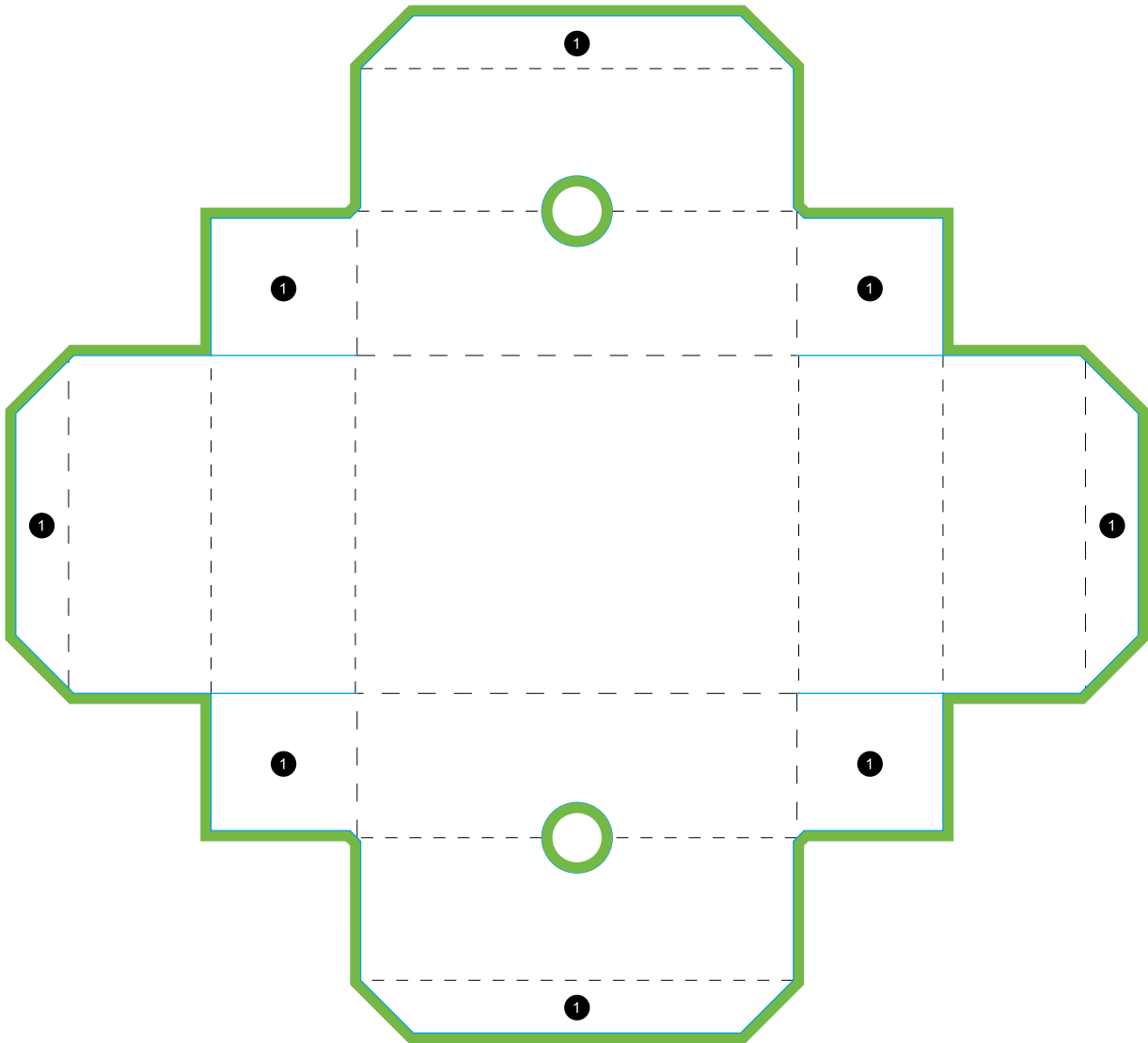
1 Flap

Please do not delete cutting die!

EXPLANATIONS

-  Information area
This area is where you should place your text and images.
-  Bleed (3 mm)
Place backgrounds and bleed-off images in this additional area in order to prevent white borders after trimming.

-  Folding line
This is where your product will be folded.
-  Preforation line / cutting line
This is where your product will be punched / cut.



● Flap

Please do not delete cutting die!

EXPLANATIONS

- Information area**
 This area is where you should place your text and images.

- Bleed (3 mm)**
 Place backgrounds and bleed-off images in this additional area in order to prevent white borders after trimming.

- Folding line**
 This is where your product will be folded.

- Preforation line / cutting line**
 This is where your product will be punched / cut.